



ایران ترانسفو نیروترانس پارس سویچ

نماینده رسمی ایران ترانسفو

نماینده رسمی نیروترانس

نماینده رسمی پارس سویچ



دانش پژوهان کاردان صنعت

K A R D A N T R A N S



تهران، فلکه اول صادقیه، گلناز شمالی، نبش کوچه پانزدهم، پلاک ۱۱، واحد ۱، کد پستی: ۱۴۵۱۶۶۳۷۶۴

۰۲۱-۴۴۳۸۰۰۶۸ ۰۲۱-۴۴۳۸۰۰۷۸ ۰۲۱-۴۴۳۸۰۰۹۸

www.kardantrans.com info@kardantrans.com

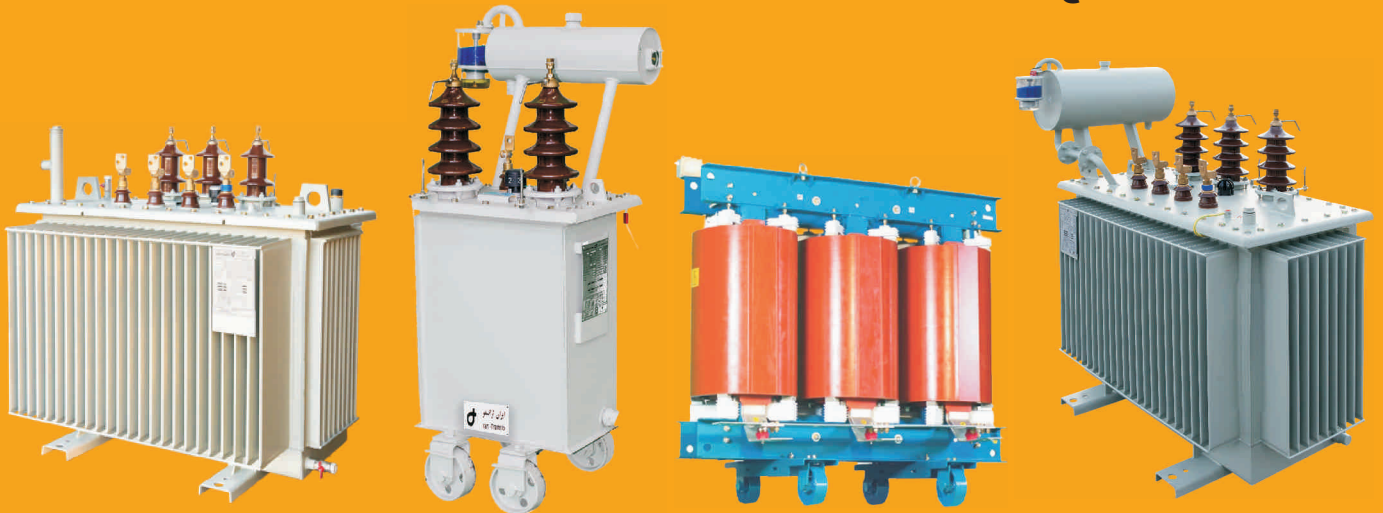


ایران ترانسفو



نماینده رسمی ایران ترانسفو

● ترانسفورماتورهای توزیع ایران ترانسفو



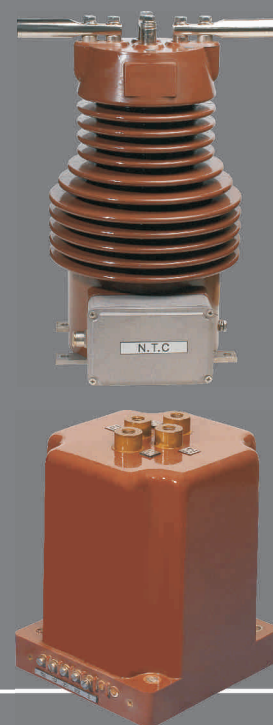
مشخصات فنی ترانسفورماتورهای روغنی کم تلفات ایران ترانسفو

جریان خروجی ترانسفورماتورهای ایران ترانسفو (راهنمای انتخاب ترانسفورماتور)	
جریان خروجی هر فاز (آمپر)	ظرفیت ترانسفورماتور (کیلوولت آمپر)
36 A	25 kVA
72 A	50 kVA
108 A	75 kVA
144 A	100 kVA
180 A	125 kVA
232 A	160 kVA
289 A	200 kVA
361 A	250 kVA
455 A	315 kVA
577 A	400 kVA
722 A	500 kVA
910 A	630 kVA
1155 A	800 kVA
1443 A	1000 kVA
1804 A	1250 kVA
2309 A	1600 kVA
2887 A	2000 kVA
3608 A	2500 kVA

Description:																
- Acc. to IEC standards;																
- Three-phase transformers, for indoor or outdoor use;																
- Step-down type (1);																
- Rated frequency: 50 Hz (1);																
- Max ambient Temp: 45°C (1);																
- Mineral oil immersed (1);																
- Conservator Type (3);																
- Cooling ONAN;																
- Final Colour RAL 7038 or 7032 (1);																
- Operation altitude up to 1000m above sea level																
Power (1)	Voltage (1)		Taps in HV side (1)	Vector group (1)	Rated impedance	Looses		Noise level	Efficiency at full load (min)	Total Weight (max)	Overall Dimensions (max)			Wheels		
	HV	LV				No-Load	Load (2)				A	B	H	interval I	diameter D	interval W
[kVA]	[kV]	[kV]	[%]	[%]	[W]	[W]	[dB]	P.F.=0.8	[kg]	[mm]	[mm]	[mm]	[mm]	[mm]	[mm]	
25	20	0.4	±1*4	Yzn5	4	110	700	48	95.72	375	857	708	1236	520	-	-
50	20	0.4	±1*4	Yzn5	4	145	1100	50	96.76	525	900	715	1307	520	-	-
75	20	0.4	±1*4	Yzn5	4	203	1425	52	97.02	575	1001	707	1456	520	-	-
100	20	0.4	±1*4	Yzn5	4	260	1750	54	97.30	660	1012	713	1440	520	-	-
125	20	0.4	±1*4	Yzn5	4	310	2000	55	97.55	810	1066	735	1479	520	-	-
160	20	0.4	±1*4	Yzn5	4	375	2350	56	97.73	905	1108	730	1492	520	-	-
200	20	0.4	±1*4	Yzn5	4	445	2760	58	97.87	985	1106	806	1543	520	-	-
250	20	0.4	±2*2.5	Dyn5	6	530	3250	60	97.95	1185	1368	845	1516	520	-	-
315	20	0.4	±2*2.5	Dyn5	6	625	3850	61.5	98.11	1355	1560	970	1599	670	-	-
400	20	0.4	±2*2.5	Dyn5	6	750	4600	63	98.18	1595	1643	920	1840	670	150	50
500	20	0.4	±2*2.5	Dyn5	6	875	5450	64	98.31	1870	1702	970	1900	670	150	50
630	20	0.4	±2*2.5	Dyn5	6	940	6750	65	98.37	2225	1785	1060	1958	670	150	50
800	20	0.4	±2*2.5	Dyn5	6	1150	8500	66.4	98.38	2705	1980	1125	2025	670	150	50
1000	20	0.4	±2*2.5	Dyn5	6	1400	10500	68	98.41	3255	1948	1182	2289	820	200	68
1250	20	0.4	±2*2.5	Dyn5	6	1730	13200	69.25	98.38	3905	2082	1300	2320	820	200	68
1600	20	0.4	±2*2.5	Dyn5	6	2200	17000	71	98.39	4725	2438	1558	2490	820	200	68
2000	20	0.4	±2*2.5	Dyn5	6	2645	21200	72.4	98.40	5685	2470	1480	2520	1070	200	68

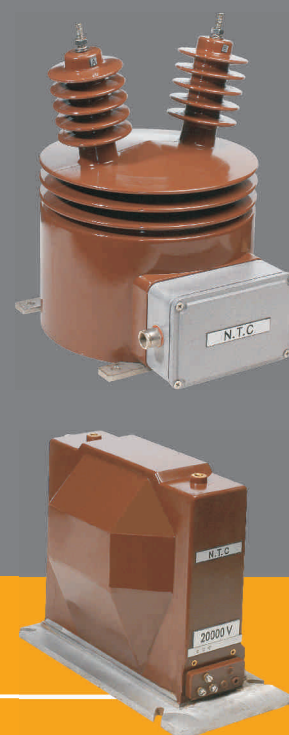
● ترانسفورماتورهای جریان فشار متوسط نیرو ترانس

Current Transformer Type: INA, UNA, NICT, APE, AGE				
Highest System Voltage	Um (kV)	12	24	36
Insulation Level	BIL kV	28-75	50-125	70-170
Rated Primary Voltage	Un (kV)	Up to 3000		
Rated Secondary Voltage	Usn (V)	1 or 5		
Rated Secondary Burden	VA	Up to 40		
Number of Secondary Windings	-	Up to 4		
Class	-	5P, 10P, X, 0.2, 0.5, 0.2S, 0.5S		
Rated Frequency	F (Hz)	50 / 60		
Installation	-	Indoor or Outdoor		



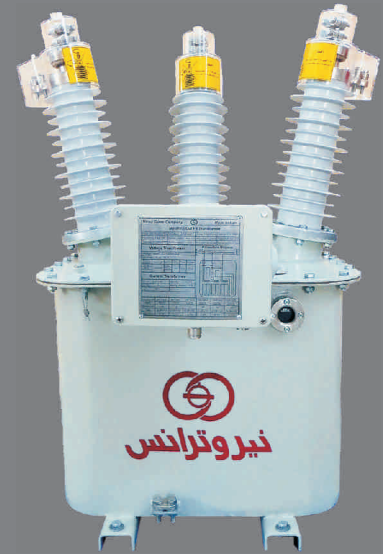
● ترانسفورماتورهای ولتاژ فشار متوسط نیرو ترانس

Voltage Transformer Type: 4VPA, 4VPA1, VPV, VPV1, GUPT, TIPT				
Highest System Voltage	Um (kV)	12	24	36
Insulation level	BIL kV	28-75	50-125	70-170
Rated Primary Voltage	Un (kV)	11,11 3	20,20 3	33,33 3
Rated Secondary Voltage	Usn (V)	100 3 or 110 3 or 100 or 110		
Rated Secondary Burden	VA	Up to 00		
Number of Secondary Windings	-	Up to 3		
Class	-	3P, 0.2, 0.5		
Rated Frequency	F (Hz)	50 / 60		
Installation	-	Indoor or Outdoor		



● ترانسفورماتورهای اندازه گیری مرکب (MOF) نیروترانس

Metering Out Fit - MOF / Combined Instrument Transformer-CIT				
Highest System Voltage	Um (kV)	12	24	36
Insulation Level	BIL (kV)	28-60	50-125	70-170
Rated Primary Voltage	Un (kv)	11	20	33
Rated Secondary Voltage	Usn (V)	100	100	110
Rated Secondary Burden	VA	30		
Rated Primary Current	Ipn (A)	Up to 300		
Rated Secondary Current	Isn (A)	5		
Class	-	0.5		
Rated Frequency	F (Hz)	50		
Installation	-	Outdoor		



● خازنهای فشار متوسط نیروترانس

Power Factor Correction Capacitor Type: KLV				
Highest System Voltage	Um (kV)	12	24	36
Insulation Level	BIL kV)	28-75	50-125	N/A
Rated Voltage of capacitor (Phase to earth)	Un (kV)	2-20		
Rated Power	Qn (KVAR)	Up to 600		
Rated Frequency	F (Hz)	50 / 60		
Losses Total	W/KVAR	< 0.15		
Max Permissible Current Continuously	-	1.3 In		
Max Permissible Voltage Continuously, 12 hours Per day	-	1.1Un		
Fuse	-	Internal (if requested)		
Discharge Resistor	-	According to design		



SF6 Gas Load Break Switch Type: PGL 24

Rated Voltage	kV	24
Frequency	Hz	50
Power frequency withstand voltage		
- to earth and between phases	kV	50
- across isolating distance	kV	60
Lightning impulse withstand voltage		
- to earth and between phases	kV	125
- across isolating distance	kV	145
Rated normal current	A	630
Mainly active load breaking current	A	630
Number of breaking operations CO (IEC 62271-103)		400
Closed loop breaking current	A	630
Line-and cable changing breaking current	A	50
No-load transformer breaking current	A	20
Electrical endurance class		E3
Short-time withstand current $I_{K(3s)}$	kA	16
Peak withstand current $I_{sym, peak}$	kA	40
Short circuit making current	kA	40
Number of making operations		5
Degree of protection		IPX 7
Creepage distance of insulators	mm	985
Mechanical endurance (number of close - open operations)		5000
Ambient air temperature limits		-40 °C + 60 °C
Filling pressure (+20 °C)	bar(abs)	2.1
Weight	kg	103

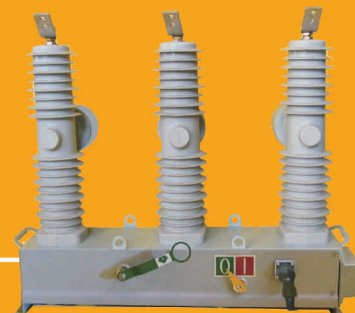
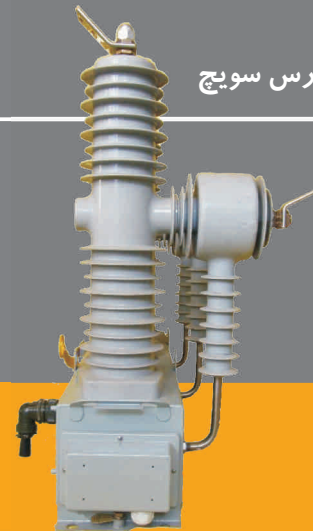
سکسیونرهای قابل قطع زیر بار هوایی پارس سویچ



Recloser Type: PVR-B24/630

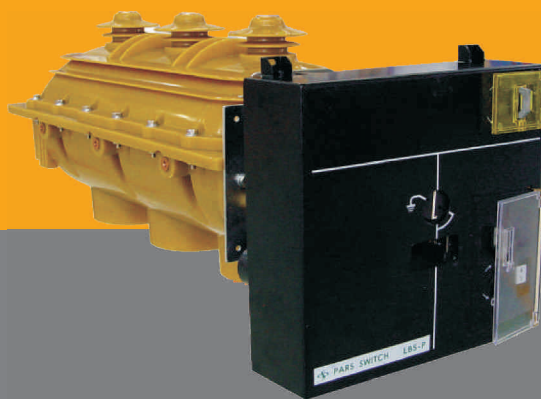
Rated voltage	kV	24
Rated current	A	630
Rated frequency	Hz	50
Rated Short-time withstand current		16
Rated peak withstand current	kA	40
Rated short circuit making & breaking current		16
Rated duration of short-circuit	Sec.	3
Rated insulation level	Rated short time (1 min) power frequency (phase to phase, to earth, break), Dry	50/65
	10 sec power frequency withstand voltage (phase to phase, to earth, break), wet	50/N/A
	Rated Lightning impulse withstand voltage, peak (phase to phase, to earth, break)	125/145
	Secondary circuit power frequency withstand voltage, 1 min	2
Rated cable, line charging breaking current	A	C2 class 25/2
Mechanical endurance class		M2(10000 times)
Main circuit resistance	$\mu\Omega$	≤ 100
Clearance between open contacts		12 \pm 1
Over travel	mm	3 \pm 1
Phases center distance		340 \pm 2
Closing and opening non- simultaneity of three-phase	ms	≤ 2
Contact bouncing duration at closing operation		≤ 3
Average opening speed	m/s	1.2 \pm 0.2
Average closing speed		0-6 \pm 0.2
Creepage distance between live part and ground	mm	≥ 600
Rated closing and opening voltage	VDC	110

رکلوزر خلا پارس سویچ



● سکسیونرهای قابل قطع زیر بار تابلویی پارس سویچ

Load Break Switch Type: LBS-P		
Lightning impulse withstand voltage	Between phases and earth	125kV
	Between isolating distance	145kV
Power frequency withstand voltage	Between phases and earth	50kV
	Between isolating distance	60kV
Rated current		630A
Short circuit withstand current		20kA-3s
Making capacity		50kA
Breaking capacity	Main load	630A
	No load transformer	16A
	No load cables	25A



● کلیدهای فشار متوسط تابلویی گازی و خلا پارس سویچ



MV SF6 Circuit Breaker Type: FB						
Type of C.B.	Rated Voltage	Rated Current	Rated Frequency	Breaking Capacity	Dielectric Tests	
					Impulse	Power Frequency
	kV	A	Hz	kA	kVp	kV ms
FP 0716 B	7.2	630	50	18.4	60	20
FP 0731 D		1250		31.5		
FP 0731 E1		1600		31.5		
FP 0731 F1		2000		31.5		
FP 1216 B	12	630	50	16	75	28
FP 1225 D		1250		29		
FP 1225 E1		1600		29		
FP 1225 F1		2000		29		
FP 2416 B	24	630	50	16	125	50
FP 2425 D		1250		25		
FP 2425 E1		1600		25		
FP 2425 F1		2000		25		
FP 3616 B	36	630	50	16	170	70
FP 3625 D		1250		25		
FP 3625 E1		1600		25		
FP 3625 F1		2000		25		